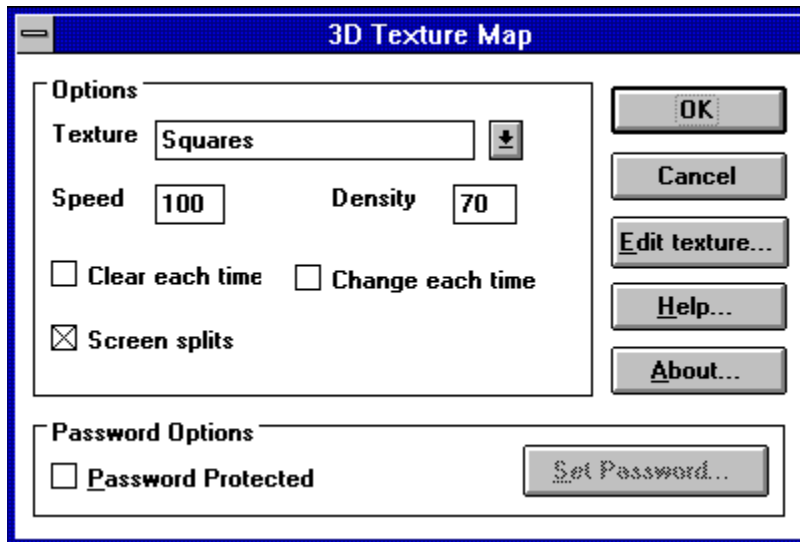


## Tallis Saver - 3D Texture Map



[Textures](#)

[Speed](#)

[Density](#)

[Clear each time](#)

[Screen Splits](#)

[Setting a password](#)

[More about Tallis Software](#)

## Textures

The texture is the 15x15 pattern that is repeated over the surface of each solid. By animating each of these patterns the whole of a solid can be animated. If you choose Random then the saver will select a different texture each time it is run. If you also click Change each time then the texture will change when each new solid is created.

## **Speed**

The speed is set by default to 100. It is best left at this value unless you have a lower spec machine, in which case you may find that the saver slows background processes - such as printing - during its operation.

## **Density**

The density controls the size of each texture and consequently the speed of animation. The lower the density, the larger the texture and the faster the animation.

## **Clear each time**

Set this option if you want the screen to clear between each solid.

## **Change each time**

If this option is checked then the colours used to create the texture will be re-set for each solid. Also, if the Random texture has been selected, the patterns on each surface will change each time.

When colours are set to be changed you will also notice the textures being animated in three different directions before a new solid is created. The three animated patterns are made up of the red, green and blue elements of the texture.

Heck. It sounds complicated, but all it really means is that the patterns will go psychedelic every now and then.

## Screen splits

Very funky effect. Check this if want the screen to quarter for each solid. The animation in each sector will continue as the solids get gradually smaller and smaller.

## **Setting the password**

Check this option to password protect the saver. To amend the password click the Set Password button.



## **More about Tallis Software**

Tallis Software was formed in early 1995 and specializes in Windows screen savers and utilities. It was named after the great Elizabethan composer [Thomas Tallis](#) For more information about this and other savers please contact

100425,2664@compuserve.com

1505-1585. Thomas Tallis served under four monarchs: Henry VIII, Edward VI, Mary Tudor and Elizabeth I. Despite being a Roman Catholic, he spent much of his career composing choral polyphony for the Protestant rite. A gentleman of the Royal Chapel, he became joint organist with his pupil William Byrd. His best known works are *Spem In Alium* (most probably for Mary in 1556 or Elizabeth I in 1573) and *The Lamentations Of Jeremiah* (c. 1545).

Select OK if you want to save the settings

Click this button if you want to discard any changes you have made..

The Help button brings up this help file.

The Edit texture button starts the 3D Texture Map designer, allowing you to change the design and name of a texture (to see the new name you will have to leave and restart setup).



